

# NOVA

Air Supplied Blast Helmet



AIRBLAST



## **SAFETY ABOVE ALL**

The high standards required of modern work environments make onsite health and safety a priority. Aside from the obvious injuries to valued people, there are the potential costs of business interruption, non-compliance, and the risk to company reputation to be considered.

## **TOUGHEST & MOST COMFORTABLE**

The NOVA has been tested and approved to Respiratory Protection standards worldwide including NIOSH, CE and AS/NZS. NOVA has been designed specifically for blasting, by blasting experts.

## **COMFORTABLE KIT - CLEAR THINKING**

A comfortable respirator system dramatically reduces worker fatigue and increases productivity. The NOVA is the most comfortable blasting helmet available.

Lightweight pillow foam padding provides maximum comfort and reduces outside noise to a minimum. A soft breathable inner cape allows perfect airflow while keeping out contaminants. The advanced Air Duct Distribution System creates a constant flow of breathable air, prevents fogging and keeps workers cool. The large, double lens offers optimum vision without irritating side glare. Every feature of the NOVA has been designed, manufactured and tested to ensure workers' safety and comfort under even the most demanding conditions.

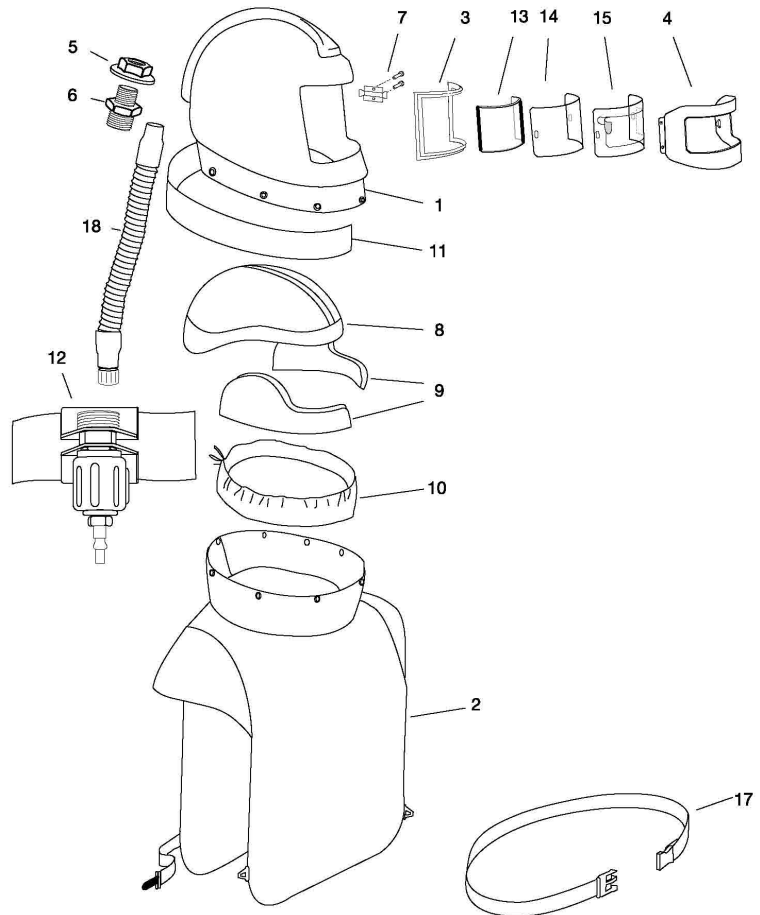
The Tear off Lenses system is a unique "FIT AND SAVE" system of pre-folded tabs. This means workers can quickly tear off just one, layered, lens at a time. Contractors have reported a time saving of over 45 minutes a day per blaster using the "FIT AND SAVE" system, and a resulting increase in productivity.

## NOVA Assembly

| Part no. | Description  |
|----------|--|
| 4700000  | Nova Air Supplied Blast Helmet, complete with<br>- In-helmet low flow warning device<br>- Breathing air tube assy<br>- Adjustable flow control valve and nylon belt<br>- Nylon cape<br>- CE approved to EN 271 |

## NOVA Parts List

| Item  | Part no. | Description                       |
|-------|----------|-----------------------------------|
| 01    | 4700100  | Helmet shell                      |
| 02    | 4700500  | Nylon cape c/w inner bib          |
| 03    | 4702400  | Window frame gasket               |
| 04    | 4702500  | Visor with hinge and screws       |
| 05/06 | 4702700  | Air inlet assy                    |
| 07    | 4702800  | Visor latch and screws            |
| 08    | 4701100  | Polystyrene helmet liner (medium) |
| 09    | 4701700  | Sidewings (medium)                |
| 10    | 4701000  | Inner bib                         |
| 11    | 4705100  | Cape cover band                   |
| 12    | 4601600  | Flow control valve and belt       |
| 13    | 4703600  | Inner lens (pack of 10)           |
| 14    | 4703800  | Outer lens (pack of 50)           |
| 15    | 4703700  | Tear-off lens (pack of 50)        |
| 17    | 4601700  | Belt with buckles                 |
| 18    | 4601400  | Breathing air tube                |



## NOVA Optional Accessories

| Part no. | Description  |
|----------|--|
| 4320001  | CCT Climate Control Tube complete with belt and regulator. Fits directly to breathing tube of Nova Blast Helmet to supply a continuous flow of cool or warm compressed air to your blast helmet. |