

Xtreme Sprayers Hopper Kit

311902B

ENG

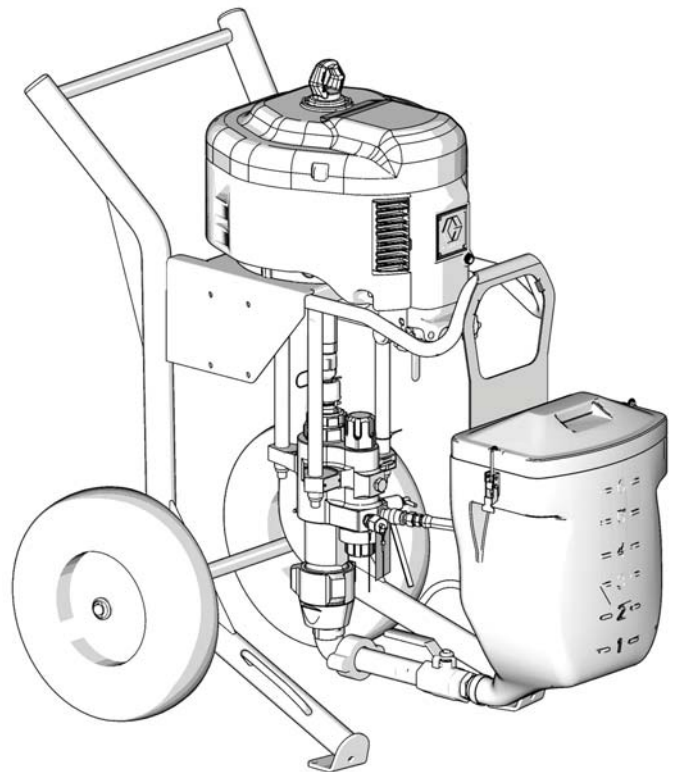
For portable spray capability with Xtreme Sprayers.

Part 288347



Important Safety Instructions

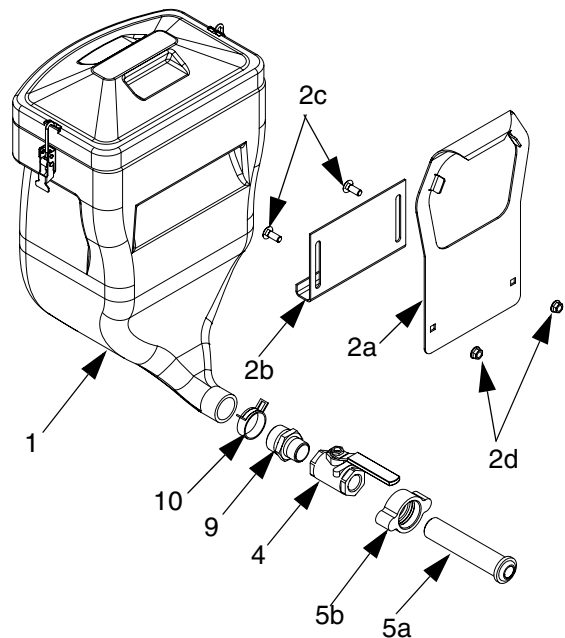
Read all warnings and instructions in manual 311164. Save those instructions.



TI8791a

Hopper Kit Assembly

1. Hang hopper bracket (2a) on hose rack of cart.
2. Attach hanger bracket (2b) to hopper bracket (2a) using supplied bolts (2c) and nuts (2d).
3. Install clamp (10) and fitting (9).
4. Hang hopper (1) on bracket assembly. Adjust bracket assembly height as necessary.
5. Assemble fittings (4, 5) to hopper.
6. Attach quick disconnect fitting (5b) to fluid inlet on pump lower.
7. Adjust bracket assembly height as necessary.



r_288347_311902_1b

Hopper Kit 288347 Parts

Ref.	Part	Description	Qty.
1	234017	HOPPER, fluid	1
2	288603	BRACKET, hopper kit (includes 2a - 2d)	1
	2a	BRACKET, hopper	1
	2b	BRACKET, hanger, hopper	1
	2c	SCREW, cap, hex head	2
	2d	NUT, hex, flanged	2
4	118464	VALVE, ball	1
5	288604	FITTING, connection, hopper kit (includes 5a - 5b)	1
	5a	FITTING, connection	1
	5b	NUT, wing	1
9	C20465	FITTING, NIPPLE, reducing	1
10	124450	CLAMP	1

*All written and visual data contained in this document reflects the latest product information available at the time of publication.
Graco reserves the right to make changes at any time without notice.*

Original instructions. This manual contains English. MM 311902

Graco Headquarters: Minneapolis
International Offices: Belgium, China, Japan, Korea

GRACO INC. P.O. BOX 1441 MINNEAPOLIS, MN 55440-1441

Copyright 2006, Graco Inc. is registered to ISO 9001

www.graco.com
Revised 06/2010